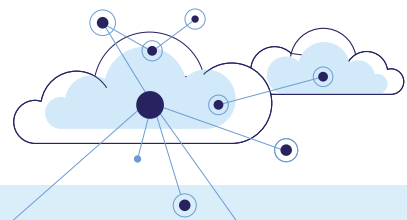


3 in 1 compact digital solution for milk collection


Introducing **prompt**[®] **SANCHAY**

mobile milk collection system

Our unique offering, Prompt Sanchay, is a revolutionary milk collection system with an in-built stirrer and thermal printer. It seamlessly integrates with Prompt mobile applications. It is robust, user-friendly, and suitable for collecting cows, buffaloes, and mixed milk.



KEY FEATURES:

-  Measures and records milk fat, SNF, added water, milk density (protein, lactose & salt-Optional)
-  SD card to store milk analysis, cleaning and calibration log
-  High repeatability of milk testing results
-  Measuring time 40 Sec
-  Option available for manual cleaning with plunger
-  One-touch analysis
-  Single curve calibration
-  Low Maintenance
-  Compatible with solar power
-  Milk collection through Prompt mobile applications
-  Spare parts are easily accessible

TECHNICAL SPECIFICATIONS:

Measuring Parameters	FAT: 0.0 to 15% with accuracy $\pm 0.1\%$
	SNF: 3 to 15% with accuracy $\pm 0.15\%$
	Added water to milk: 0 to 60% with accuracy $\pm 5\%$
	Density: 1.0220 g/cm ³ to 1.0360g/cm ³ with accuracy ± 0.0005 g/cm ³
	Protein: 2% to 6% with accuracy $\pm 0.2\%$ (Optional)
	Lactose: 0.5% to 7% with accuracy $\pm 0.2\%$ (Optional)
	Salt: 0.4% to 1.5% with accuracy $\pm 0.05\%$ (Optional)
	Resolution: $\pm 0.01\%$ for Fat, $\pm 0.01\%$ for SNF, $\pm 1\%$ for added water, ± 0.0001 g/cm ³ for density, $\pm 0.01\%$ for Protein, $\pm 0.01\%$ for Lactose, $\pm 0.01\%$ for Salt
	Repeatability: $\pm 0.03\%$ for Fat, $\pm 0.05\%$ for SNF, $\pm 0.5\%$ for added water, ± 0.0002 g/cm ³ for density
Measuring Time	40 seconds
Milk Temperature	5°C ~ 40°C
Operating Facilities	In-built stirrer, Cleaning, Single curve calibration, Error list, Suitable for Cow/Buffalo/Mixed Milk
	Milk collection through Prompt mobile applications
Display	16 characters by 2 lines with 10mm character heights, alphanumeric LCD display
Keys	5 Push-button keys
Storage	8GB SD card for log and measurement data storage
Interface	3 RS232 Serial ports
	1 USB Host port
	Bluetooth (BLE)
	2" Thermal printer
Power Input	AC Supply: 230V $\pm 15\%$, 50 Hz
	DC Supply: 12V to 14V DC, 10A
	Solar: 50W
Battery	12V 12Ah LiFePO4
Environmental Conditions	Ambient Air Temperature: 10°C ~ 50°C
	Relative Humidity: 30% to 80%
Power Consumption	Average 80 watts, peak 135 watts with printer
Loose Accessories	RS232 serial cable - 3 Qty.
	Battery power cable - 1 Qty.
	Monthly cleaning solution - 1 Qty.
	Daily cleaning solution - 1 Qty.
	Measuring mug - 2 Qty.
	Operating manual (English) - 1 Qty.
	Plunger - 1 Qty.

Prompt Equipments Pvt. Ltd.

7th Floor, Shaligram Corporates, C. J. Road, Iskon - Ambli Road, Ahmedabad Gujarat - 380058 (India)
 info@promptdairytech.com | www.promptdairytech.com

Ph: 02717 45 1111/ 6111 Follow us on   

Scan the QR Code to know more:

