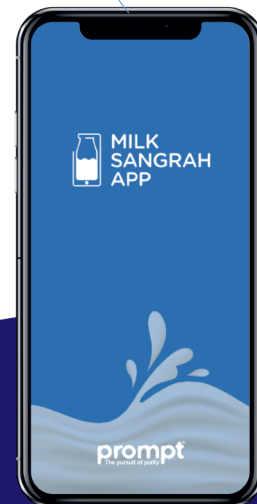
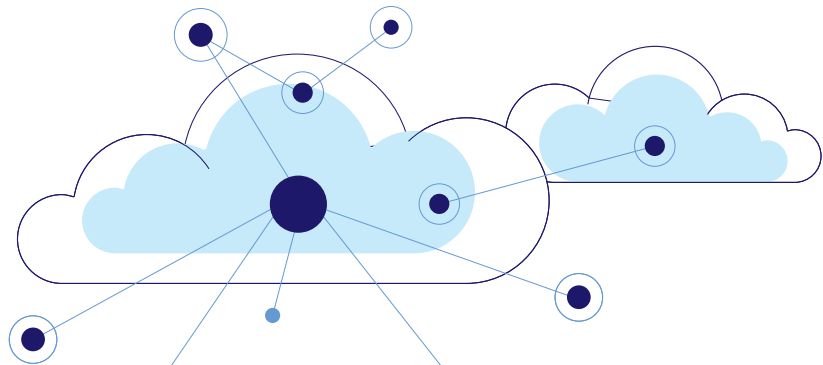


prompt[®] MILK SANGRAH



automatic milk collection app



Existing Challenges

Many milk collection centres in India still practice manual recording of milk collection which is prone to errors and manipulation. Also, there is no standardised way of keeping the records, because of which, there is no analytical data available to improve the quantity and quality of milk. Since all the major functions are handled

manually, the entire process becomes time-consuming. Moreover, the rate charts as well as the farmer ledgers are not updated periodically which creates issues regarding the payment of farmers. And this lack of transparency results in trust deficit between the farmers and the milk collection centres.

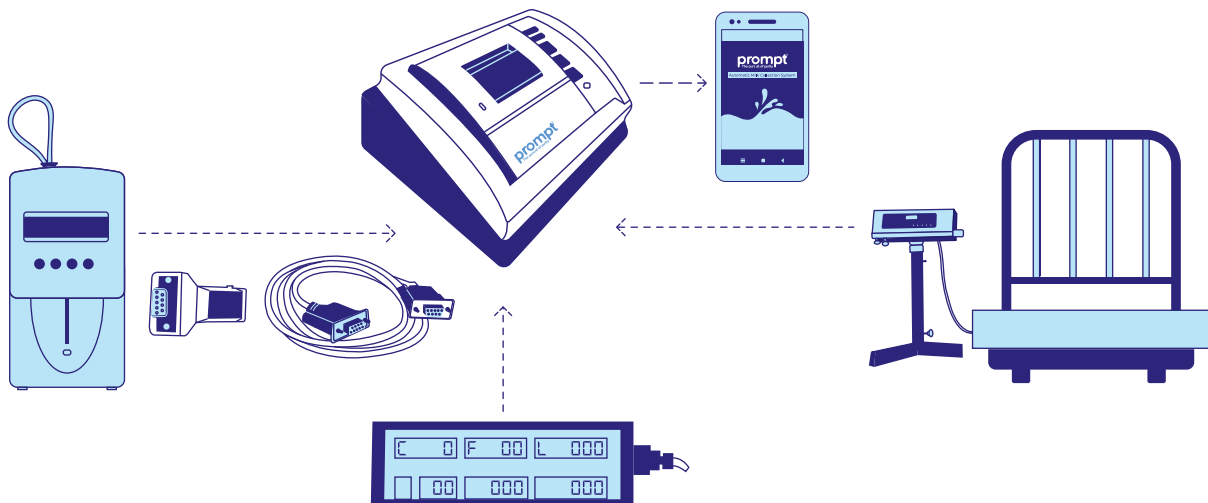
PRESENTING PROMPT'S Milk Sangrah App with Easy5 Printer

Milk Collection on your Smartphones

With around 30 years of rich experience in delivering digital milk collection systems and with 55000+ users in 27+ states across India, Prompt proudly brings you a smart and digital Android-based solution - Milk Sangrah App with Easy5 Printer.

Our solution comes with the Easy5 Printer, an intelligent communication device, which interfaces with any make of Milk Analyzer, Weighing Scale and Digital display through a

RS 232 Cable or a Bluetooth dongle. The Easy5 Printer captures milk collection data and sends it to the Bluetooth enabled Milk Sangrah app. The Milk Sangrah app instantly sends an SMS to farmers and prints receipt through the Easy5 Printer featuring an in-built thermal printer. User can also connect external keyboard or external printer. The entire milk collection data is updated on cloud in real-time, making the entire process of milk collection transparent.



TECHNICAL SPECIFICATION OF EASY5 PRINTER

Processor	32-bit ARM Controller
Display	2 LEDs · 1 for Bluetooth connectivity of hardware interface and Mobile · 1 for Battery Indication
Key	2 Keys · 1 Key for Feed Button for Thermal Printer · 1 Key for configuring the hardware interface with Mobile app
Bluetooth	4.2 version
RS232 Port	3 RS232 Ports - To connect external devices like Weighing Scale, Fat machine or Milk Analyzer, Additional Display
USB Host Port	1 USB Port - To connect USB Dot Matrix Printer Interface
Printer	Inbuilt 2" Thermal Printer
Body	ABS Plastic
Power Supply	180-260 Volts, 50 Hz
Battery	2200 mAh

BENEFITS



A completely smart and digital solution eliminating the manual milk collection process



A single platform for recording and accounting of milk collection data



Ensures fast and accurate milk collection



Hardware of any make can be interfaced through our solution



Instant analysis and advanced reports enable informed decision making



Ensures right payment to farmers resulting in trust and transparency between farmers and milk collectors



Local Sales and Accounting Report are available with detailed transactions

	Key Highlights
App Specification	<ul style="list-style-type: none"> · Works with Android 7.0 and above · Works in online as well as offline mode · Supports multiple languages
Subscription	<ul style="list-style-type: none"> · User can download the app from Google Play Store · User can purchase the system through suitable subscription model
Masters	<ul style="list-style-type: none"> · User can add, view, edit or delete all the Masters settings · User friendly and easily configurable app - User is independent of Service Engineer for settings · Message master option is available to stay in touch with the stakeholders
Rate Chart Management	<ul style="list-style-type: none"> · Multiple rate chart can be uploaded - FAT base, FAT-SNF base, FAT-LR base and Solidbase · Excel with formula-based milk rate chart can be directly imported in the app · Multiple rate charts for multiple farmers · Future rate chart management · Multiple rate charts with effective date and shift · Different rate charts for different collection centres · Rate recalculation feature · Milk rate for Milk Type - Cow/Bufalo/Mix/Other
Milk Collection	<ul style="list-style-type: none"> · Collection can be carried out both manually or automatically · Collection data is stored on any mobile phone based on login credentials · The app sends instant SMS and alerts to farmers · The app supports Litre or Kilogram (Kg) based milk collection
Reports	<ul style="list-style-type: none"> · Various detailed reports of Milk collection, Farmers, Purchase, Payment, Dispatch, Society, Bonus, Account, Milk Edit are available · Local Sales Report and Summary are available with detailed cash and credit transactions · The entire milk collection data is stored on the cloud and can be integrated with SAP/ERP portal · Analytical Reports can be exported and printed through an Easy5 printer or an external dot matrix printer

Prompt Equipments Pvt. Ltd.

7th Floor, Shaligram Corporates, C. J. Road, Iskon - Ambli Road,
Ahmedabad Gujarat - 380058 (India) Ph: 02717 45 1111/6111
info@promptdairytech.com | www.promptdairytech.com

Follow us on 



Scan the QR Code
to know more