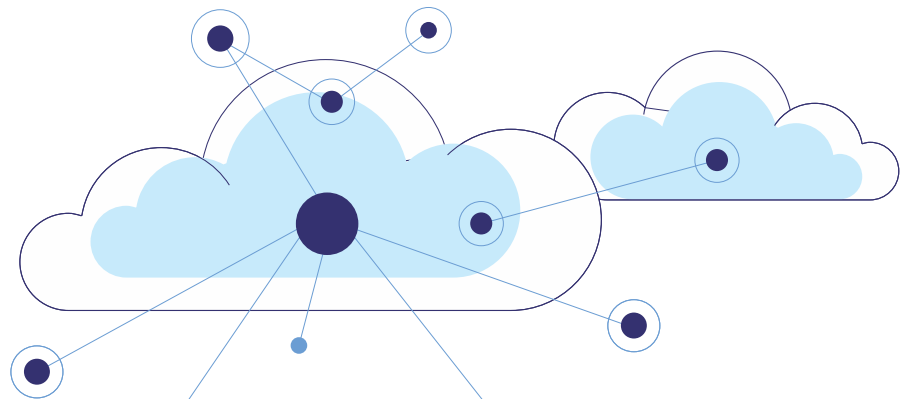


# Android-Based Smart Milk Collection for a Faster, Error-Free Process

**prompt**<sup>®</sup>  
**MILK SETU**  
automatic milk collection app



## Existing Challenges

Many milk collection centers in India still practice manual recording of milk collection which is prone to errors and manipulation. Also, there is no standardized way of keeping the records, because of which there is no analytical data available to improve the quantity and quality of milk. Since all the major functions are

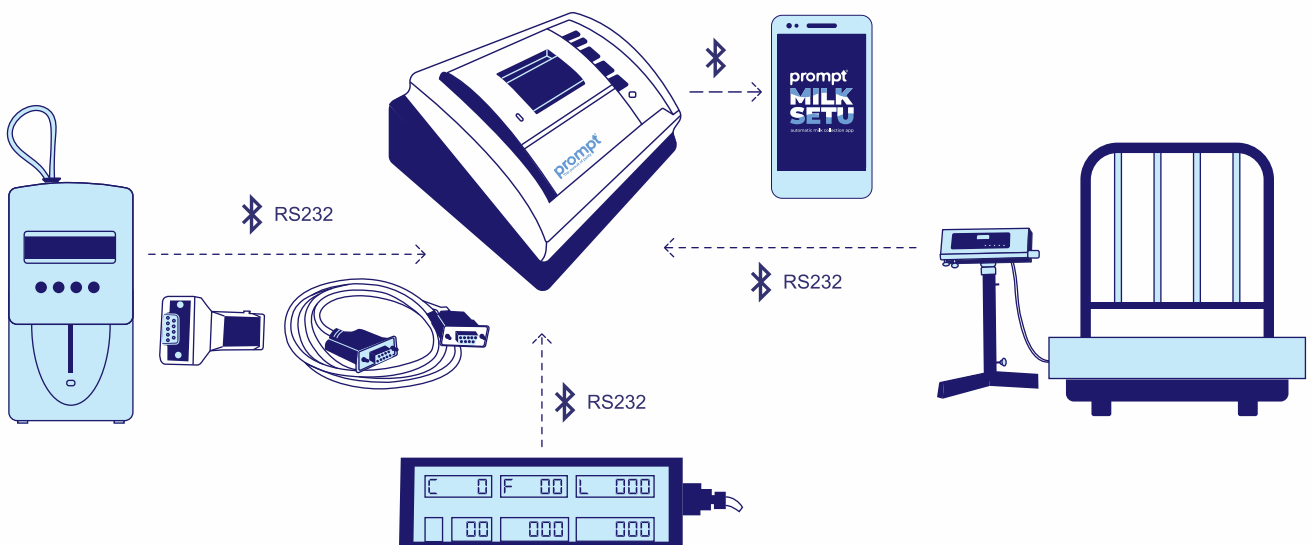
handled manually the entire process becomes time-consuming. Moreover, the rate charts as well as the farmer ledgers, are not updated periodically which creates issues regarding the payment of farmers. And this lack of transparency results in trust deficit between the farmers and the milk collection centers.

## PROMPT'S SOLUTION

# Android Based Milk Collection App

Prompt's milksetu app is an android-based smart and digital solution that brings the entire milk collection system on your smart phone. It is connected to Easy5 printer through bluetooth. The Easy5 printer is an intelligent communication device that connects with the milk analyzer, weighing scale, and digital display Easy5 sends all the milk collection details to the mobile app, which calculates amount payable to farmer.

Any make of hardware can be interfaced through this solution. Instant analysis and advanced reports allow informed business decision making. Such digital solutions ensure fair payment to the farmers, thereby enabling trust and transparency between farmers and collection centers.



## Key Highlights

|                               |   |
|-------------------------------|---|
| <b>App Specification</b>      | <ul style="list-style-type: none"> <li>• Works with android 7.0 and above</li> <li>• Works in online as well as offline mode</li> <li>• Real-time milk data syncs from mobile to server, and master data syncs from server to mobile</li> </ul>   |
| <b>Masters</b>                | <ul style="list-style-type: none"> <li>• User can view all the masters settings</li> <li>• Mobile application allows following masters be configured through server via gsm or wi-fi</li> <li>• Society master, user master, farmer master, system configuration, milk rate, interfacing hardware setup.</li> <li>• User wise role defines</li> <li>• Any hardware interface with easy-5 printer and easy-5 printer it connects with milksetu app</li> </ul>  |
| <b>Rate Chart Management</b>  | <ul style="list-style-type: none"> <li>• Multiple rate chart can be uploaded - fat or fat-snf base</li> <li>• Excel with formula-based milk rate chart can be directly imported in the app via web portal.</li> <li>• Multiple rate chart for multiple farmer</li> <li>• Future rate chart management</li> <li>• Multiple rate chart with effective date and shift</li> <li>• Morning and evening shift wise</li> <li>• Different rate chart for different collection centres</li> <li>• Milk rate for milk type - cow / buffalo / mix</li> <li>• Rate re-calculate option available in milksetu.</li> </ul>  |
| <b>Milk Collection</b>        | <ul style="list-style-type: none"> <li>• Fast and Real time milk collection</li> <li>• Milk collection allowed for farmers</li> <li>• Supports max. 9999 farmers per society</li> <li>• Supports Ltr or Kg measurement unit</li> <li>• Unique farmer code generated across system</li> <li>• Send SMS and alerts to farmers</li> <li>• Milk collected from the same farmer in same shift more than once – configuration option</li> <li>• Data sync on server real time</li> <li>• Dashboard and graph based analyse for milk collection</li> <li>• Item Sales and deduct in farmer payment</li> <li>• OTP based authentication in farmer Item Sales</li> </ul> |
| <b>Dispatch</b>               | <ul style="list-style-type: none"> <li>• Milk type wise dispatch</li> <li>• During auto dispatch, weight, FAT, and SNF are fetched automatically</li> <li>• Manual dispatch – configuration option</li> </ul>   |
| <b>Inventory</b>              | <ul style="list-style-type: none"> <li>• Item sale and sale return only</li> </ul>  |
| <b>Addition and Deduction</b> | <ul style="list-style-type: none"> <li>• Addition and deduction entry</li> </ul>  |
| <b>Backup &amp; Transfer</b>  | <ul style="list-style-type: none"> <li>• From milksetu app</li> <li>• Milk collection can be allowed on other mobile if person/mobile not available.</li> </ul>   |
| <b>Data Transfer</b>          | <ul style="list-style-type: none"> <li>• Auto Sync data via internet.</li> <li>• All the milk collection data is stored in mobile application.</li> <li>• Auto sync to prompt server.</li> <li>• Data can be integrated with SAP/ ERP portal. It is chargeable.</li> </ul>  |
| <b>Reports</b>                | <ul style="list-style-type: none"> <li>• Various detailed reports of milk collection, farmers, payment and dispatch are available</li> <li>• Milk slip</li> <li>• Dispatch slip</li> <li>• Item sale bill</li> <li>• Farmer list</li> <li>• Milk purchase register</li> <li>• Milk purchase summary</li> <li>• Farmer milk payment</li> <li>• During auto dispatch, weight, FAT, and SNF are fetched automatically</li> <li>• Reports can be exported as PDF and shared via whatsapp or email.</li> </ul>   |

## Technical Specification


|               |  |
|---------------|--|
| Processor     | 32-bit ARM Controller  |
| Display       | <b>2 LEDs</b><br>· 1 for Bluetooth connectivity of hardware interface and mobile<br>· 1 for Battery Indication                     |
| Key           | <b>2 keys</b><br>· 1 key for feed button for thermal printer<br>· 1 key for configuring the hardware interface with the mobile app |
| Bluetooth     | 4.2 version  |
| RS232 Port    | <b>3 RS232 Ports</b> - To connect external devices like weighing scale, Fat machine or milk analyzer, extra display                |
| USB Host Port | 1 USB Port - To connect USB Dot Matrix Printer Interface   |
| Printer       | Inbuilt 2.0 Inch thermal printer   |
| Body          | ABS Plastic  |
| Power Supply  | 180-260 Volts, 50 Hz   |
| Battery       | 2200 mAh   |

## Benefits of MilkSetu App

- Total automation & ease of operation
- Fast, accurate & real-time collection
- Single platform for recording of milk collection data
- Mobile application allows following masters be configured through server
- Hardware of any make can be RS232 interfaced through our solution
- Excel-based rate charts can be directly imported into the app via the portal
- Multiple rate charts can be uploaded
- Separate milk rate can be uploaded for cow/ buffalo/ mix milk
- Instant analysis and advanced reports enable informed decision making
- Ensures right payment to farmers resulting in trust and transparency between farmers and milk collectors
- Ensures role based security and backup facility
- Milk collection allowed to other mobile when person/mobile not available

### Prompt Equipments Private Limited

7th Floor, Shaligram Corporates, C. J. Marg, Iskcon - Ambli Road,  
Ahmedabad, Gujarat, India - 380058

www.promptdairytech.com | info@promptdairytech.com | Follow us on: 

For more information, call us: +91 75730 01132

