

prompt[®]
The pursuit of purity

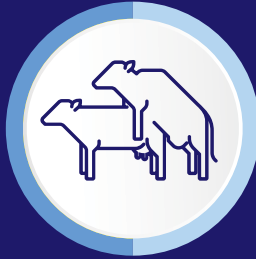


prompt[®]
BOVSMART[™]

Cattle Monitoring System

THE SMART WAY
TO MONITER
**CATTLE HEAT
AND HEALTH**

Current Challenges in Cattle monitoring

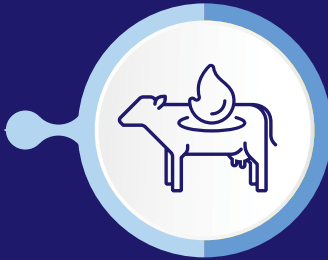


Missed or Undetected Heat Cycles

Cattle exhibit heat for a short period, often in subtle ways. Over 50% of heats go unnoticed, leading to missed breeding opportunities and extended calving intervals.

Silent Heats and Irregular Patterns

Some cows do not show visible estrus signs, making it difficult for farmers to detect when they are in heat. Stress, nutrition, and seasonal changes can further affect heat expression.

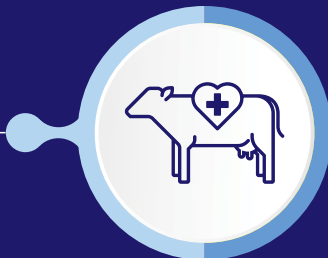


Dependence on Manual Observation

Traditional cattle monitoring depends on manual observation for detecting heat and health issues, making it labor-intensive and error-prone. Farmers may miss early signs of illness or estrus, especially during low-visibility hours, leading to delayed interventions and reduced farm efficiency.

Delayed Disease Diagnosis

Delayed detection of illnesses can lead to severe health deterioration, higher treatment costs, and potential cattle loss. Without continuous monitoring, diseases often progress unnoticed until it's too late, impacting milk yield and overall farm profitability.

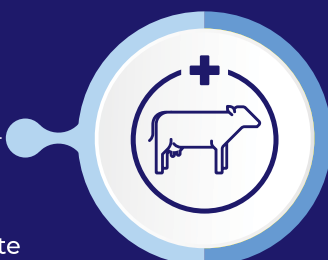


Increased Cost and Time

Unsuccessful breeding attempts mean higher artificial insemination (AI) costs and veterinary consultations. Each failed cycle adds financial strain to the farm, making effective heat detection necessary.

Impact on Overall Herd Health

Long calving intervals and reproductive inefficiencies contribute to poor herd management, affecting milk yield, longevity, and overall farm sustainability.



IoT-Enabled Monitoring of Cattle Activities

The Bovsmart Bovine Monitoring System plays a crucial role by enabling timely detection for insemination. The Optimal Breeding Period for successful insemination lasts as little as 8 to 16 hours, making precise heat detection vital. Without accurate tracking, farmers often miss optimal breeding windows. Along with

ensuring timely breeding, the system also alerts farmers to potential health issues or emergencies, allowing for early intervention. This proactive health monitoring ensures that the herd remains healthy and productive, minimizing the risk of disease and improving overall farm efficiency.

Components of the Bovsmart IoT Heat Detection & Health Monitoring System

Cattle Monitoring Tag

With the Prompt BovSmart Tag, dairy farmers can eliminate guesswork in heat detection and health monitoring. This wireless, easy-to-attach device tracks rumination, motion, and fertility

status in real time, transmitting actionable insights to help optimize breeding and disease prevention. The robust design ensures long-lasting performance, making it an essential tool for modern dairy farms.



Controller Unit

The Heart of Cattle Monitoring

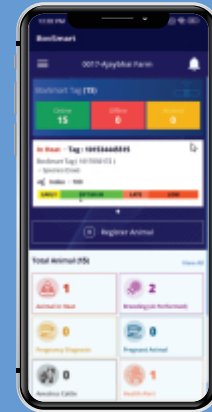
The BovSmart Controller Unit is an advanced IoT-enabled hub designed to efficiently manage cattle monitoring at the farm level. With a coverage radius of 250 meters, a single unit can seamlessly handle 500+ animal tags, ensuring continuous data collection and transmission. As an IoT device, the controller stays constantly connected to the cloud, enabling real-time data synchronization for remote access and analysis. It gathers activity, rumination, and health insights from the tags, processes the information, and securely transmits it for data-driven decision-making. Designed for high reliability and scalability, the BovSmart Controller Unit automates livestock tracking, providing timely health alerts, accurate heat detection, and enhanced herd productivity, reducing manual labor while optimizing farm efficiency.



User interface

Mobile App

The BovSmart user interface is designed for seamless farm management, offering real-time insights, historical data, and automated reports through its Web Dashboard and Mobile App. The system enables efficient breeding, health, and herd performance monitoring, ensuring data-driven decisions for dairy farmers.



Web Dashboard – Comprehensive Insights

- Farm Summary Dashboard – Real-time view of heat cycles, insemination, and health status.
- Historical Data & Trends – Analyze breeding, health, rumination, and eating patterns for better decisions.
- Advanced Reports & Graphs – Get detailed analytics on herd activity, heat detection, and feeding behavior.
- Multi-Farm Dashboard – Monitor multiple farms on one screen, ideal for large dairy operations.

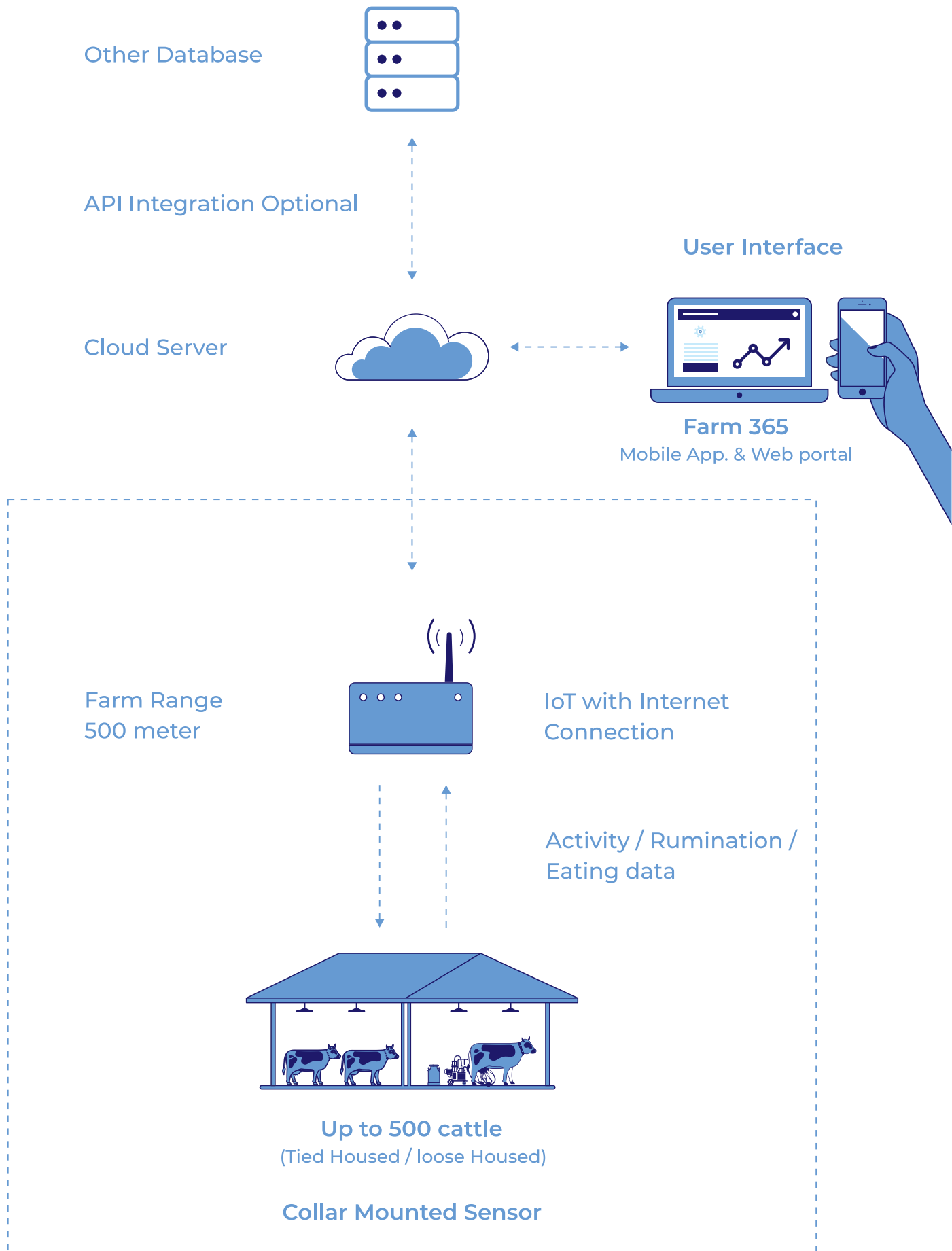


Mobile App - Cattle insights right at your fingertips

- Live Animal Tracking – Monitor real-time activity, rumination, eating, and posture.
- Instant Alerts – Receive SMS, push, and email notifications for heat and health concerns.
- Breeding & Health Records – Digital logs for insemination, vaccinations, and disease history.



Network Diagram



Benefits of Prompt BovSmart Cattle Monitoring system

24/7 Real-Time Monitoring

The innovative IoT-enabled system provides 24/7 monitoring to ensure you never miss a heat cycle and receive timely heat alerts directly on your device.



Improved Herd Reproductive Efficiency

Regular and early detection of heat cycles helps maintain better reproductive planning, ensuring every cow contributes optimally to herd productivity.



Higher AI Success Rates

Timely heat detection ensures insemination at the right time, increasing pregnancy chances, reducing missed cycles, and minimizing repeat inseminations, saving time and resources.



Early Health Issue Detection

The system monitors vital health parameters, enabling the early detection of potential health issues. Early intervention can prevent disease progression, reduce treatment costs, and promote better animal welfare.



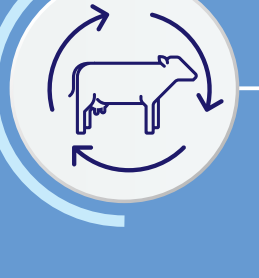
Maximized Milk Production

Shorter calving intervals and more days in milk result in higher yields, while early pregnancy confirmation allows for strategic dry period planning.



Enhanced Herd Wellbeing

The system monitors vital health parameters, enabling the early detection of potential health issues. Early intervention can prevent disease progression, reduce treatment costs, and promote better animal welfare.



Enhanced Herd Wellbeing

Continuous monitoring of rumination, activity, and overall behavior helps detect signs of stress, illness, or discomfort, ensuring healthier cows and improving overall farm efficiency.

Technical Specifications

Tag weight and size	125g, 122 mm*65 mm* 41 mm
Belt size	Standard 40 mm belt
Radio frequency band	865-867 Mhz
Tag's peak emitted power	20dBm
Wireless data transfer rate	100kbps
Wireless operating range	250m*250m (LOS)
Gateway battery back-up	12 hrs
Tag's Battery life	3 years
Data backup memory (Tag)	20 Min (Raw Data)
During Learning	15 Days
After Learning	6 Hrs (Processed Data)
Operating temperature	'-20 to 85°C
Ingress protection rating	Ip67
Number of tags supported	100
Tag calibration period	10-15 days



Our ideas and innovations are a part of the pursuit of maintaining the sanctity of milk so that the world's most ancient health drink can be appreciated as it truly is – untouched and unadulterated.



Optimise your farm with other related products

BovEasy - Bovine pregnancy rapid test kit

The BovEasy Bovine pregnancy rapid test kit is a game changer in bovine reproductive management. Combining precision, affordability, and speed, it offers accurate pregnancy detection in just 20 minutes. This easy to use kit empowers farmers and veterinarians with reliable results, optimizing breeding strategies and herd health while minimizing waiting time and costs.



MilkEasy Milking Machine

MilkEasy Milking Machine is designed to milk cattle quickly, efficiently, hygienically, and ensuring maximum comfort to the cattle.



Prompt Equipments Pvt. Ltd.

7th Floor, Shaligram Corporates, C. J. Road, Iskon - Ambli Road, Ahmedabad Gujarat - 380058 (India)

info@promptdairytech.com | www.promptdairytech.com

Ph: 02717 45 1111/6111 | Follow us on    

Scan the QR Code to know more:

