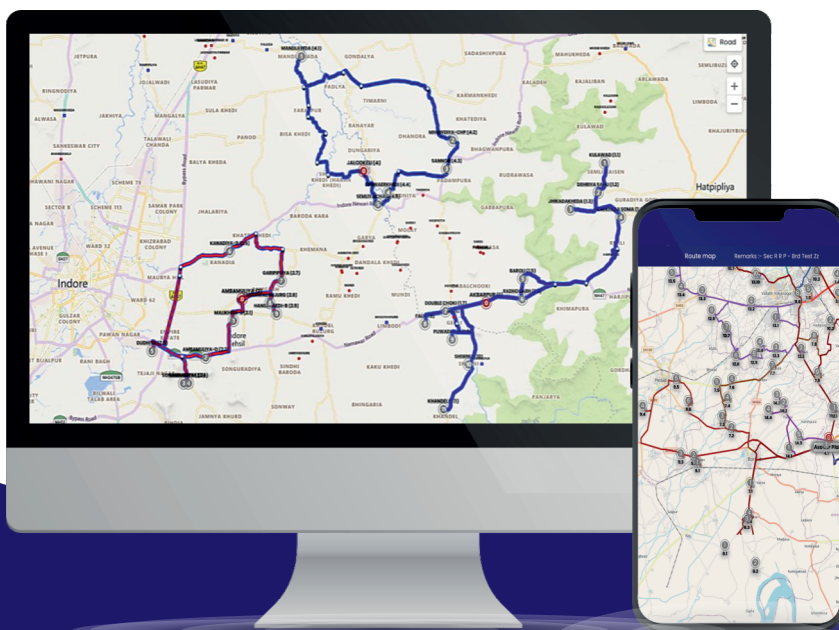


AI-POWERED SMART ROUTE OPTIMIZATION FOR MAXIMUM SAVINGS AND SUSTAINABILITY

prompt[®]
ROUTE365

AI-based smart route optimization platform



SOLVE THE KEY CHALLENGES WITH AI-BASED SMART ROUTE PLAN

High transportation costs

Inefficient route planning often results in excessive travel distances, leading to higher fuel expenses and increased wear and tear on vehicles, and directly impacts the profitability of your operations.

Inefficient resource utilization

Improper planning can lead to vehicles being under-loaded or over-loaded, causing inefficiencies in resource utilization and necessitating more trips than needed.

Poor handling of large-scale operations

As businesses scale, manual management of vehicles and routes leads to delays, inefficiencies and high chances of clerical errors. Digital solutions are essential to optimize operations and reduce costs.

Environmental impact

Increased fuel consumption and inefficient routes contribute significantly to carbon emissions, harming the environment and clashing with sustainability goals.

Increased operational costs and reduced profits

Inefficient processes and sub-optimal routes escalate operational expenses, such as fuel and labour costs. Over time, this reduces profit margins and hampers business growth.

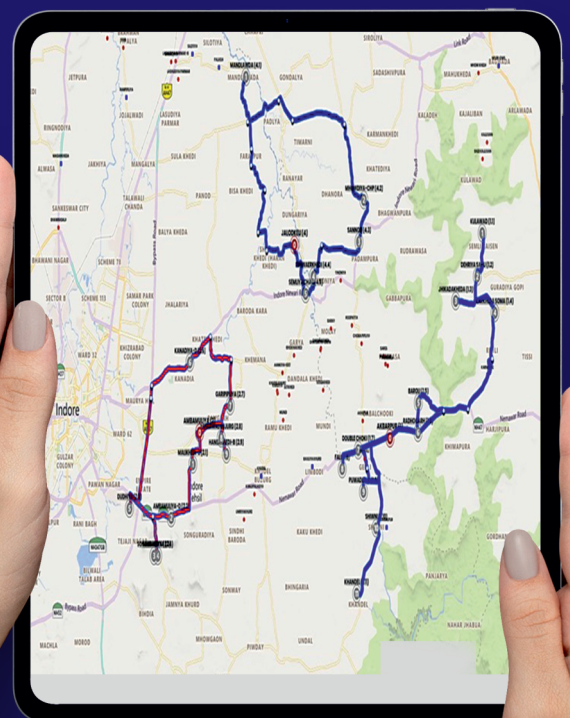
ETA SLA violations

Failure to meet Estimated Time of Arrival (ETA) and Service Level Agreements (SLA) due to inefficient routing impacts customer trust and satisfaction. Frequent violations can damage reputation and lead to financial losses.

INTRODUCING prompt[®] ROUTE365

AI-based smart route optimization platform

The Route 365 is an AI-based smart route optimization system provides real-time road map updates and customizable routing options, enabling dairies to plan the most efficient routes. It also suggests the most suitable vehicles for each route, reducing operational costs. Route 365 optimizes logistics, improves efficiency, and enhances productivity.



BENEFITS OF IMPLEMENTING AN EFFICIENT AND INTELLIGENT ROUTE OPTIMIZATION SYSTEM

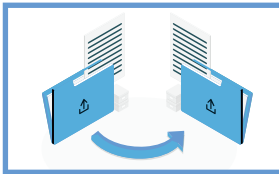


Real-time route optimization

It is AI-based algorithm that provides real-time data which enables to dynamically adjust routes. Route 365 collects, analyzes, and leverages data from various sources, including milk procurement data and vehicle availability which are critical for informed decision-making in route planning.

Dynamic route planning with multi-constraint

Route 365 optimizes routes by considering vehicle capacity, time limits, and pickup priorities, improving fuel efficiency, minimizing delays, and enhancing operational cost-effectiveness.

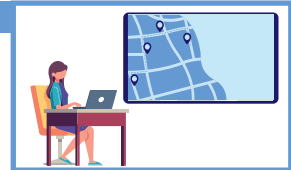


Easy data management

It can be integrated with your ERP, CRM, or other software to ensure smooth data flow and operational continuity.

Updated roadmap data

Provides updated route information to ensure that routes are always based on the latest and most accurate data.



In-built analytics and reporting

Enhanced decision-making capabilities through actionable insights derived from advanced analytics and proprietary algorithms.

Dynamic vehicle selection

Route365 intelligently assigns vehicles based on capacity and route requirements that ensure the most efficient use of resources.

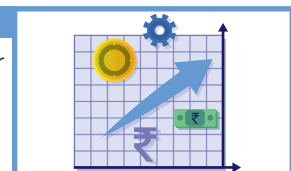


Unlimited transactions and user access

Handle unlimited transactions and provide access to multiple users without additional costs, ensuring scalability for your business.

Minimized carbon footprint

By optimizing routes and fuel consumption, Route365 helps you lower your environmental impact while improving profitability.



Our ideas and innovations are a part of the pursuit of maintaining the sanctity of milk so that the world's most ancient health drink can be appreciated as it truly is – untouched and unadulterated.



28+ states



350+ districts



70,000+ villages



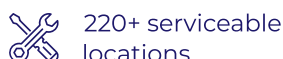
1100+ team members



Legacy of over 3 decades



10 patented products

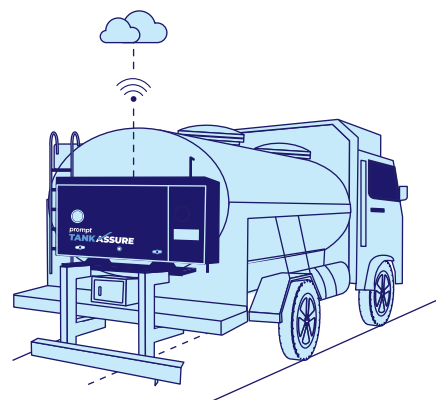


220+ serviceable locations

Optimise your business with other related products

Prompt TankAssure

Prompt TankAssure is an intelligent and digitally secured closed and containerized system mounted behind a milk tanker with RFID tagged tamper-proof sample vials. It automatically collects milk samples, records milk quantity and milk temperature through an in-built temperature sensor. This data is also recorded on the web portal.



Prompt Logistic App

Logistic App is an Android-based app which streamlines operational efficiencies of Milk Unions, by allowing route planning for trucks and digitizing transport management process in dairy supply chain. The app tracks transporters in real-time, stores images and data, and produces analytical reports.



Prompt Equipments Pvt. Ltd.

7th Floor, Shaligram Corporates, C. J. Road, Iskon - Ambli Road, Ahmedabad Gujarat - 380058 (India)
info@promptdairytech.com | www.promptdairytech.com

Ph: 02717 45 1111/6111 | Follow us on    

Scan the QR Code to know more:

